

COSTA BLANCA MOUNTAIN WALKERS - WALK DESCRIPTION

Visit www.walksinSpain.org for more walks descriptions in Spain

Walk description originally prepared by:-	Ralph Phipps
Last Updated	13 th November 2024
Title of Walk	The Ridges of Pedreguer county
Location of Start (include name of nearest village/town at start of description)	Pedreguer. Street parking on outskirts of town.
Key Statistics for walk - Distance in km	8
Key Statistics for walk - Ascent in m	340
Key Statistics for walk - Walking time and total completion time including any stops	3hr 4hr
Key Statistics for walk - Grade (using CBMW system)	M/C
Grid reference of start point (if known)	Lat: 38.7929, Long: 0.04036
Directions to Start	From the CV732 turn in to Carrer de Mexic. Park as soon as you can or continue a few meters downhill and turn L into Carrer Josep de la Tona and park along here.
Short walk description	A horseshoe route over 2 of Pedreguer's unwalked ridges. An easy track start leads on to a rough but clear path which improves as we progress before descending along a ridge line with open views of Montgo and Segaria.
Full Walk Description	
<p>Walk back uphill along Carrer de Mexic. Cross the main road and continue ahead uphill curving R and then L to follow the steepest line.</p> <p>When the children's playground is on your RHS turn R above this and when you meet tarmac again turn L for just a few metres before turning R rising up a rough track.</p> <p>At the crest of this turn L along a continuing track which rises steadily with many zig-zags.</p> <p>When the zig-zags run out you will reach an area where the path appears to continue straight ahead, but avoid this and instead turn L rising over a short rocky area to find a continuing path moving off to the L and uphill.</p>	<p>Elapsed Walking Time/Distance so far</p> <p>390m, 6min</p> <p>1.6km, 31min</p>

Remember that you use these walk guides at your own risk. Take precautions and if unsure – turn back!

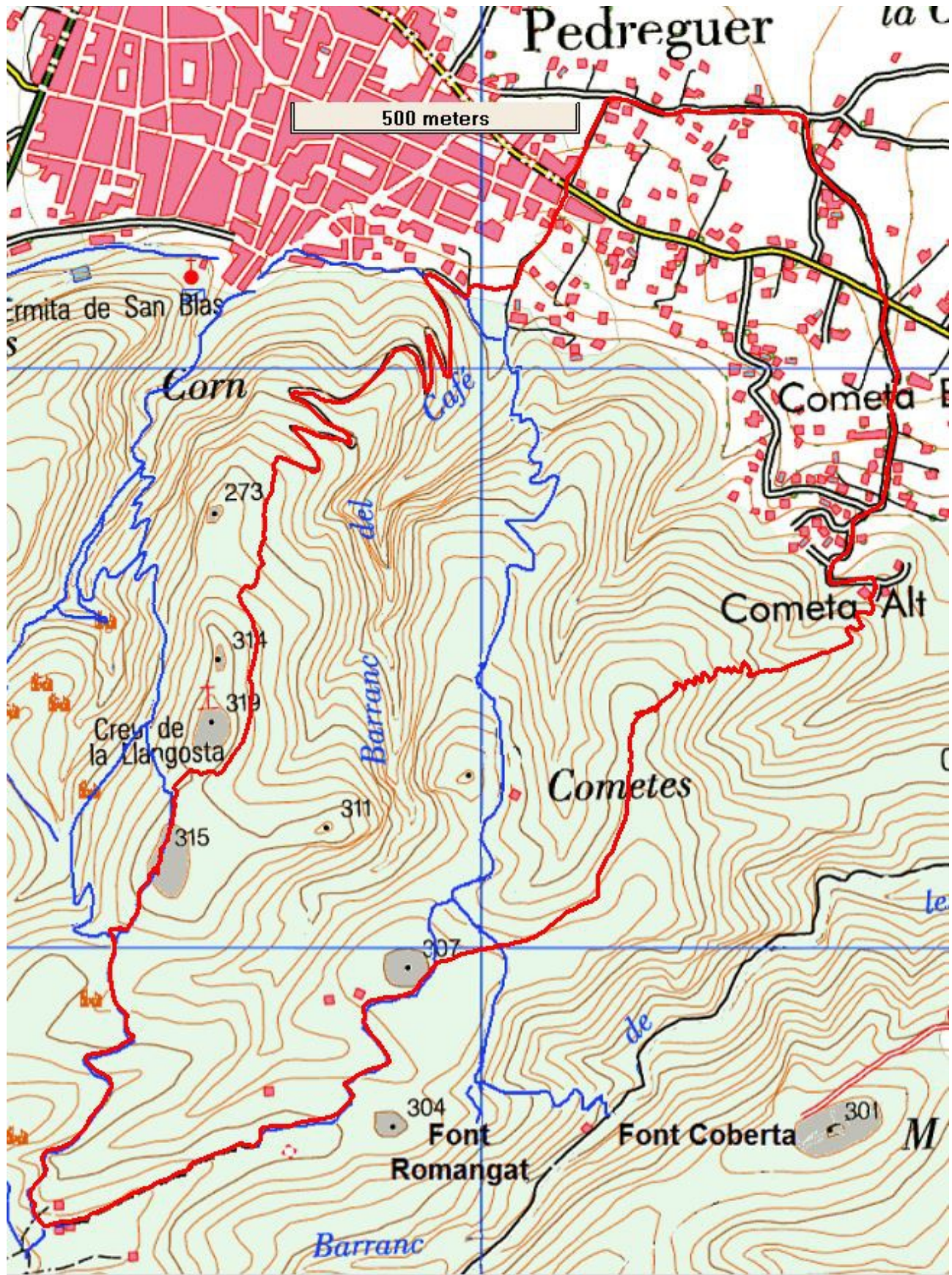
COSTA BLANCA MOUNTAIN WALKERS - WALK DESCRIPTION

Follow this now for some time with occasional rocky sections as it keeps to the L flank of the ridge before finally turning uphill on the R to reach a junction with a path on the R which sets off towards a summit but we turn L descending briefly to another junction with a finger post just below..	2.3km, 48min
Here, avoid going off downhill down the side of the hill but instead continue uphill to the L soon crossing a short but very rocky section before dropping again on the R to reach a col with a junction with a Y/W path.	2.6km, 58min
Here turn L and now follow this path as it rises steadily to arrive at a junction just below a road.	3.3km, 1hr 12min
The R turn climbs a few metres to this road, but we avoid this and instead turn L, immediately passing a house above us at the start of an ecological plantation of vines and other crops.	
Continue along this path rising over a hill and descending the other side with one or two minor zig-zags often between fences and walls to arrive at a terrace which you cross to the L and curve around further to the L towards a house. Just before the house turn R rising and keep ahead.	4.1km, 1hr 26min
As you start to descend look out for an indistinct path forking R at a cairn where a Y/W continues L. Take the indistinct path.....	4.3km, 1hr 30min
and continue ahead quickly meeting a cross path where you continue directly ahead with a Y/W cross.	
Pass a ruin and quickly after that what appears to be an occupied (or used) building.....	4.8km, 1hr 38min
and shortly after this zig-zag down on a delightful path ignoring any short cuts that risk damaging the original line of the path.	
When you reach a rough track turn L downhill	5.4k, 1hr 53 min
and follow this to finally emerge on tarmac where you turn R between houses and then L at the next junction.	
Now follow the tarmac down the steepest line ignoring any side turnings to reach the CV732.	
Cross this a few metres to the L and then turn R downhill again ignoring a road that joins you from the L until you reach a T-jnc where you turn L.	
After a short while you pass a small zig-zag L and then R and after this take the next L turn to find yourself in Carrer de Mexic and the start of the walk.	
<small>Spanish maps included within these descriptions are provided courtesy of the Spanish IGN and remain © Instituto Geográfico Nacional</small>	
Walk Recommendations or restrictions	None

See map below.....

Remember that you use these walk guides at your own risk. Take precautions and if unsure – turn back!

Route followed is outlined in Red



Remember that you use these walk guides at your own risk. Take precautions and if unsure – turn back!