

## **COSTA BLANCA MOUNTAIN WALKERS - WALK DESCRIPTION**

Visit [www.walksinSpain.org](http://www.walksinSpain.org) for more walks descriptions in Spain

<b>Walk description originally prepared by:-</b>	Mark and Jane Smith
<b>Last Updated</b>	23 <sup>rd</sup> February 2025
<b>Title of Walk</b>	Tossel Del Moro from Gata De Gorgos
<b>Location of Start (include name of nearest village/town at start of description)</b>	Gata de Gorgos Large open parking area at end of Carrer Pou de Pedreguer.
<b>Key Statistics for walk - Distance in km</b>	13
<b>Key Statistics for walk - Ascent in m</b>	310
<b>Key Statistics for walk - Walking time and total completion time including any stops</b>	4hr 4.75hr
<b>Key Statistics for walk - Grade (using CBMW system)</b>	M/B
<b>Grid reference of start point (if known)</b>	Lat: 38.7777801 Long: 0.0823237
<b>Directions to Start</b>	Enter Gata de Gorgos using N332 from direction Ondara or Benissa and turn right or left depending on approach onto Calle Trossets then first right onto Carrer Pou De Pedreguer, car park on right.
<b>Short walk description</b>	Exit Gata De Gorgos ascending along gorge. Now begin a loop climbing steadily in a clockwise direction to summit of Tossel Del Morro. Descend continuing in a clockwise direction back to top of gorge at edge of Gata De Gorgos. This completes the loop. Now return to Gata de Gorgos duplicating initial route. The walk is basically a pan handle configuration.
<b>Full Walk Description</b>	<b>Elapsed Walking Time/Distance so far</b>
Exit car park and turn right opposite Trossets Bar.  Proceed along road and cross over at Generali Insurance Office, following sign for Tourist Information.  Farmaci on right, bear left at waste bins  Turn right at shrine  First left after Bar De Baix	

**Remember that you use these walk guides at your own risk. Take precautions and if unsure – turn back!**

## **COSTA BLANCA MOUNTAIN WALKERS - WALK DESCRIPTION**

Descend to gorge and turn right, follow river bed.

Climb steps, turn left at top along concrete road then veer left down rough tack ( dead end sign )

Turn right after house with blue window frame and follow track.

Gradual ascent with gorge on right

At top of ascent turn left following PRCV412. Yellow spot on rock

Gradual ascent to stone shelter on left

Continue to right, walk through gap between two houses and the turn right along concrete road direction Cami De Les Mallades

At top of road turn left ( crosses on rock ) onto track

At top of track turn left ( yellow and white cross on rock )

Steady climb following yellow and white markers

White, red and yellow marker on path

Information sign on left – Forn De Calc

At finger post turn right towards Tossal De Moro

Cross cut out of floor on path

Ruin on right, pass to left of ruin and ascend steeply following yellow and white markers

Reach summit of Tossal De Moro

Short steep descent to flat area

Continue descending along tack

House on left

Turn left at bottom of hill and descend on wide path

At finger post ( ruin on left ) turn right direction Corral De Borell CV412.2

At concrete road turn left

Turn left off concrete road at sign Cami De Les Mallades towards white house

Turn left at ruin

Descend into barranca

Ascend back out and turn left towards house with lemon tree in garden

**Remember that you use these walk guides at your own risk. Take precautions and if unsure – turn back!**

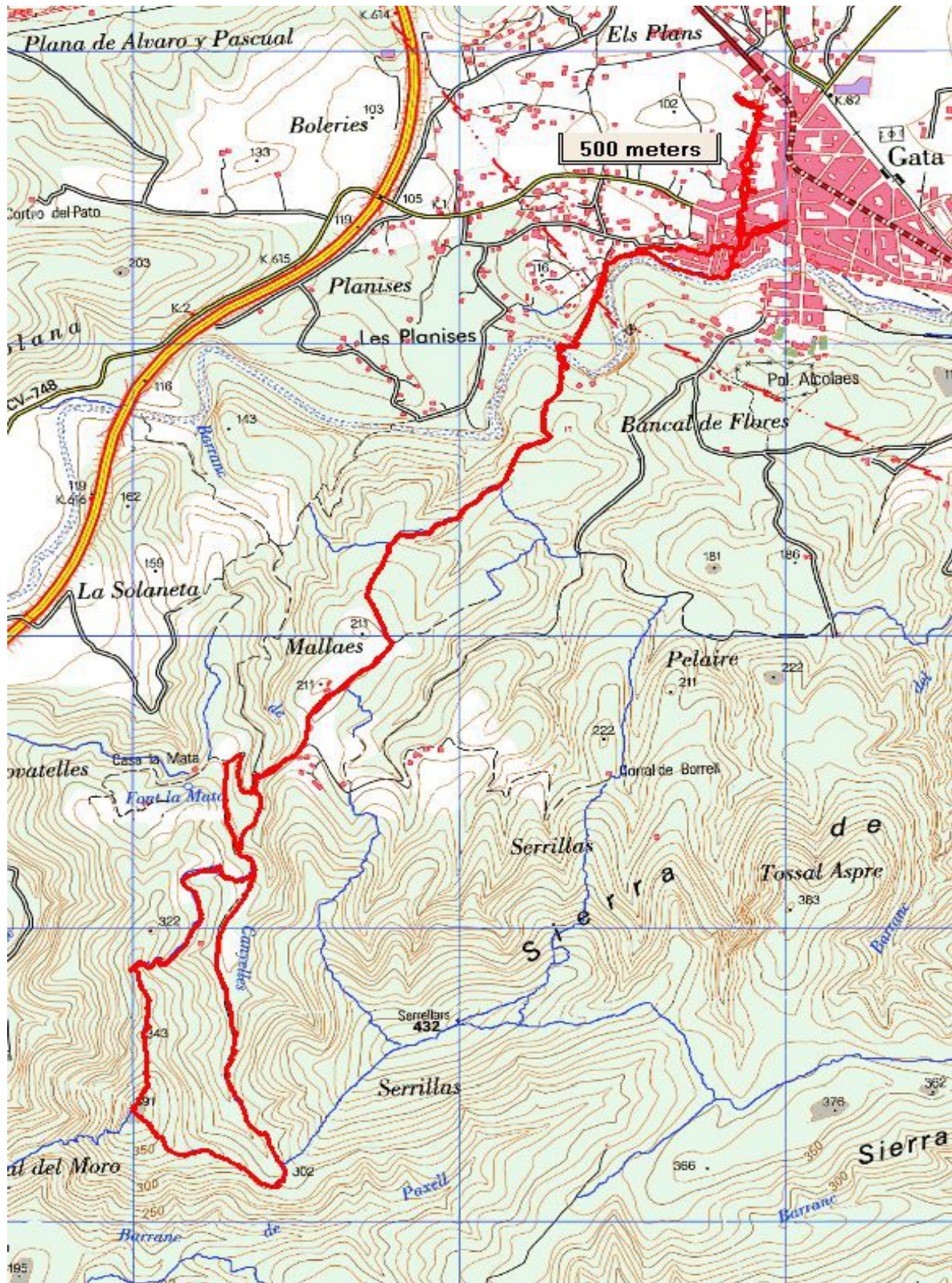
## **COSTA BLANCA MOUNTAIN WALKERS - WALK DESCRIPTION**

<p>Ignore steps, turn right by tree and continue to concrete road</p> <p>Turn right towards Gata De Gorgos</p> <p>Turn left at end of road and go uphill</p> <p>Take first right then turn left at plant pots</p> <p>Proceed past Farmaci on left, past Generali Insurance Office and then turn left outside Trossets Bar back into car park to complete walk</p> <p><small>Spanish maps included within these descriptions are provided courtesy of the Spanish IGN and remain © Instituto Geográfico Nacional</small></p>	
<b>Walk Recommendations or restrictions</b>	None

See map below.....

**Remember that you use these walk guides at your own risk. Take precautions and if unsure – turn back!**





Remember that you use these walk guides at your own risk. Take precautions and if unsure – turn back!