

COSTA BLANCA MOUNTAIN WALKERS - WALK DESCRIPTION

Visit www.walksinspain.org for more walks descriptions in Spain

Walk description originally prepared by:-	Colin Read
Last Updated	4th May 2025
Title of Walk	Senda Del Toro
Location of Start (include name of nearest village/town at start of description)	Simat de la Valldigna. Parking near Tourist Information office.
Key Statistics for walk - Distance in km	9.6
Key Statistics for walk - Ascent in m	655
Key Statistics for walk - Walking time and total completion time including any stops	4hr 6hr
Key Statistics for walk - Grade (using CBMW system)	S/C
Grid reference of start point (if known)	Lat:- 39.04409, Long:- -0.30874
Directions to Start	From roundabout on CV-600 at edge of town turn L onto CV-675 bypass. At roundabout turn first R across a bridge, at mini roundabout turn R and park along side of road. Start at mini roundabout next to bus shelter beside information board. There is also parking at tourist information office but it is often full.
Short walk description	A steady climb to a mirador. Then a steep section with awkward rock steps. A diversion to a Sima and another to the Cross. Good paths all Y/W lead to the Alt de Mirador. A branch path G/W leads extremely steeply over rough, awkward, rocky terrain down to a Col. Good paths lead back to the town. Fine views. There are variations available, these are noted in the full description.
Full Walk Description	Elapsed Walking Time/Distance so far
<p>This walk has a number of longer options. The Route described matches the gps track. It takes in all the main points of interest and though it is the shortest option it follows the most difficult terrain! If all the alternative options as well as the extension to 'Cova Patricio' are included it will increase the length to 15km and raise the height of ascent to over 800 metres, lifting the grade to VS. All the alternatives are signposted and clearly marked Y/W and don't require a gps track.</p>	

Remember that you use these walk guides at your own risk. Take precautions and if unsure – turn back!

COSTA BLANCA MOUNTAIN WALKERS - WALK DESCRIPTION

With your back to the information board and the river. Turn R along the walkway. Cross the road to turn second L into C' del Moli. At a 'T' junction cross the road to the L into C' Sant Miquel to arrive at the Placa Constitucio. Cross the road ahead turn R and bear round to the L into and along C' de L'Om. At its end, next to a walk information board go up steps. Now go straight ahead on a path over a cross path and continue straight on for 200 metres to a signpost at a 'Y' junction.	12min, 659m
Turn R signed to 'Sima del Toro' PR-CV 50 (most of the walk is now marked Y/W). In a few meters at a vague junction turn R slightly down hill. Ignore a path descending on the right and continue through woodland, then through a more open area with views towards the sea, until a signpost is reached beside a path on the left.	27min, 1.3km
(Note: Option 1. It is possible to continue straight ahead along the PR-CV 50, avoiding this next steep section. It will add about 1.5km to the walk).	
Otherwise turn L signed to 'Sima del Toro' PR-CV 50.1. Follow this path steeply uphill, until a bench seat at the Mirador de Valldigna is reached. Continue up on similar terrain. The path then traverses to the left. Look out for a sharp turn up R (here the path appears to go straight ahead and is marked wrongly with a rogue Y/W). The path now climbs very steeply up over multiple awkward rocky steps (not scrambling but closely related to it). After this rough section it emerges onto more open hillside and leads to a 'T' junction with signpost. (Note: Option 1, also arrives here).	1hr 07min, 2.1km
Turn L signed 'Sima del Toro' PR-CV 50. At the next signpost there is an option to turn L and in about 30 metres visit the 'Sima' (an abyss or hole). After viewing return to the main path. Continue uphill to reach another junction on the left with a signpost.	1hr 25min, 3km
Turn L signed to 'Crueta Del Toro' (again this is optional). This path descends slightly, ignore a path branching off to the left (Y/WX) and continue rightwards to the reach the Cross. Return via the same route to the signpost on the main path.	1hr 44min, 3.8km
Continue to the L. Ignore a minor path on the left and continue rightwards to a signpost at a junction. (Note: For those wishing to avoid the steep and awkward descent, this is the junction you will return to, in order to follow the PR-CV 50).	2hr 07min, 4.9km
Turn L signed to 'Alt del Mirador.' Follow this path to a junction with a minor path on the right which has a small finger post. (Note: this is the start of the steep descent) Continue along the main path straight ahead to reach the 'Alt del Mirador (575m).	2hr 22min, 5.6km
Turn back and return to the small fingerpost at the junction with the minor path now on your left.	2hr 31min, 6km
(Note: Option 2. If you wish to avoid the very steep and awkward descent. Continue ahead, back to the junction mentioned above. Turn L and follow the PR-CV 50 on a circuitous route to the Col de les Tres Cases, where you will rejoin this description. This will add about 3km to the walk).	
Turn L signed to 'Connexio a Cases' the way is marked G/W. At first it descends and crosses over undulating terrain and is a little overgrown in places but not scratchy. It then plunges down a very steep rocky hillside with many awkward steps, aiming towards the col and a picnic bench, which seems to recede further away as you descend! Care is needed to spot the faded G/W marks. Finally with great relief the lower cross path is reached. Turn L and in several meters more a signpost and the picnic bench are reached. This is the Col de les Tres Cases.	3hr 16min, 7km

Remember that you use these walk guides at your own risk. Take precautions and if unsure – turn back!

COSTA BLANCA MOUNTAIN WALKERS - WALK DESCRIPTION

Ignore a path on the right and go straight ahead, signed to 'Ruta dels Forn de Calc & Cova de Patricio' PR-CV 50. Ignore a second path on the right just as the main path turns to the left. Continue, winding down the barranco then along its flank to reach a signpost at a path junction on the left.

3hr 45min, 8.1km

(Note: Option 3. Here it is possible to extend the walk by turning left uphill and following the good well marked path to 'Cova de Patricio' PR-CV 50.2. It then continuous with fine views to the back of the town. It will add about 1.2km and 160 meters of height gain.)

Continue straight ahead downhill, passing a 'Forn de Calc' to reach a surfaced track. Turn L down it to reach a 'T' junction with a Cami. Turn L and follow it to a junction at the edge of the town. Turn 1st R into C' dels Brolls and follow it ignoring roads on the left. It turns left to reach a 'T' junction. Cross the road to arrive at the 'Font Gran'. Go straight ahead along 'Passeig del Nou d'Octubre' (past cafes) to return to the mini roundabout and the information board at the starting point.

4hr 07min, 9.6km

Note:-

The semi ruined Monastery nearby at the eastern edge of the town is worth a visit.

Spanish maps included within these descriptions are provided courtesy of the Spanish IGN and remain © Instituto Geográfico Nacional

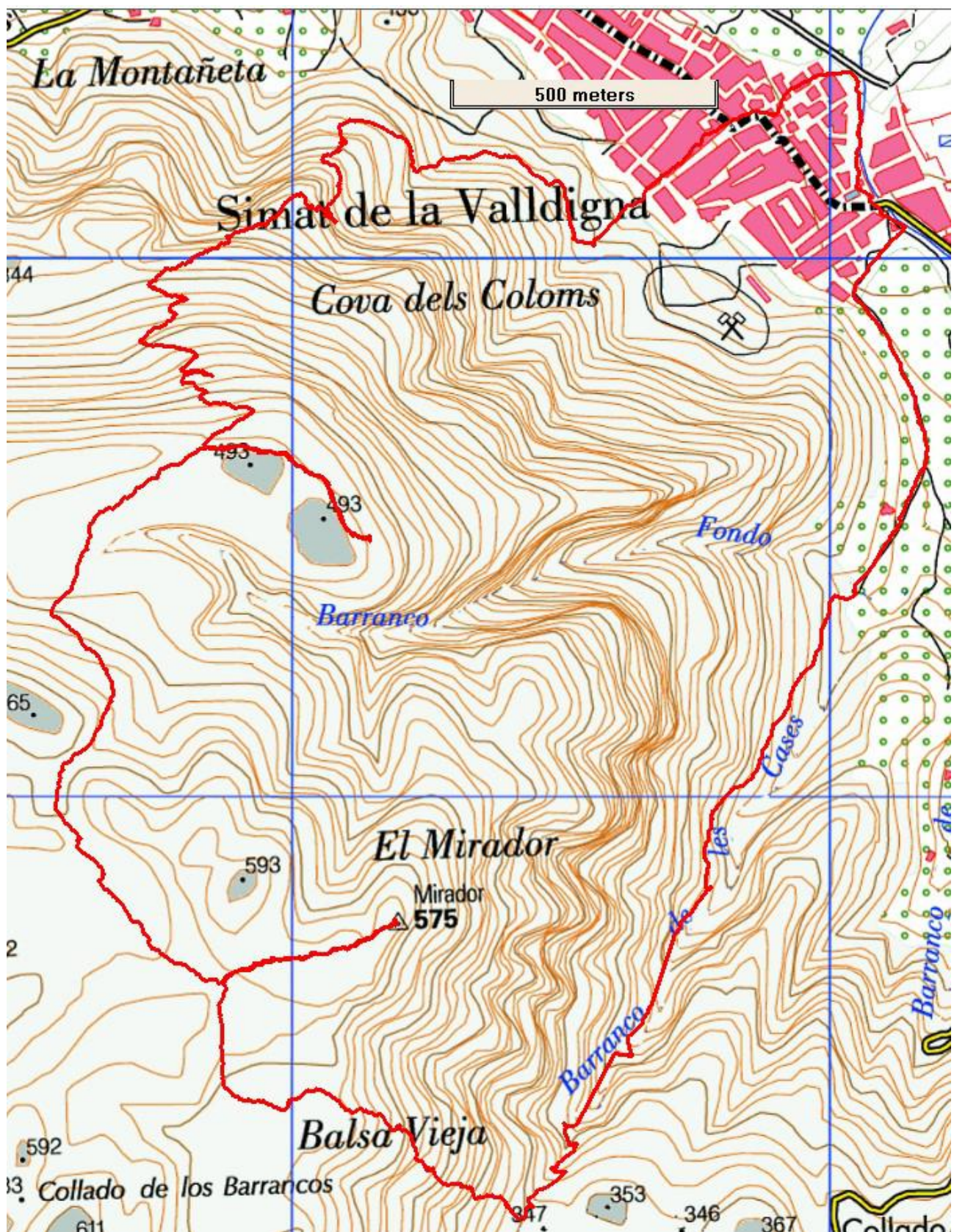
Walk Recommendations or restrictions

The steep descent at 6km is not suitable for dogs and would be dangerous when wet.

see map below.....

Remember that you use these walk guides at your own risk. Take precautions and if unsure – turn back!

Route followed is outlined in Red



Remember that you use these walk guides at your own risk. Take precautions and if unsure – turn back!