

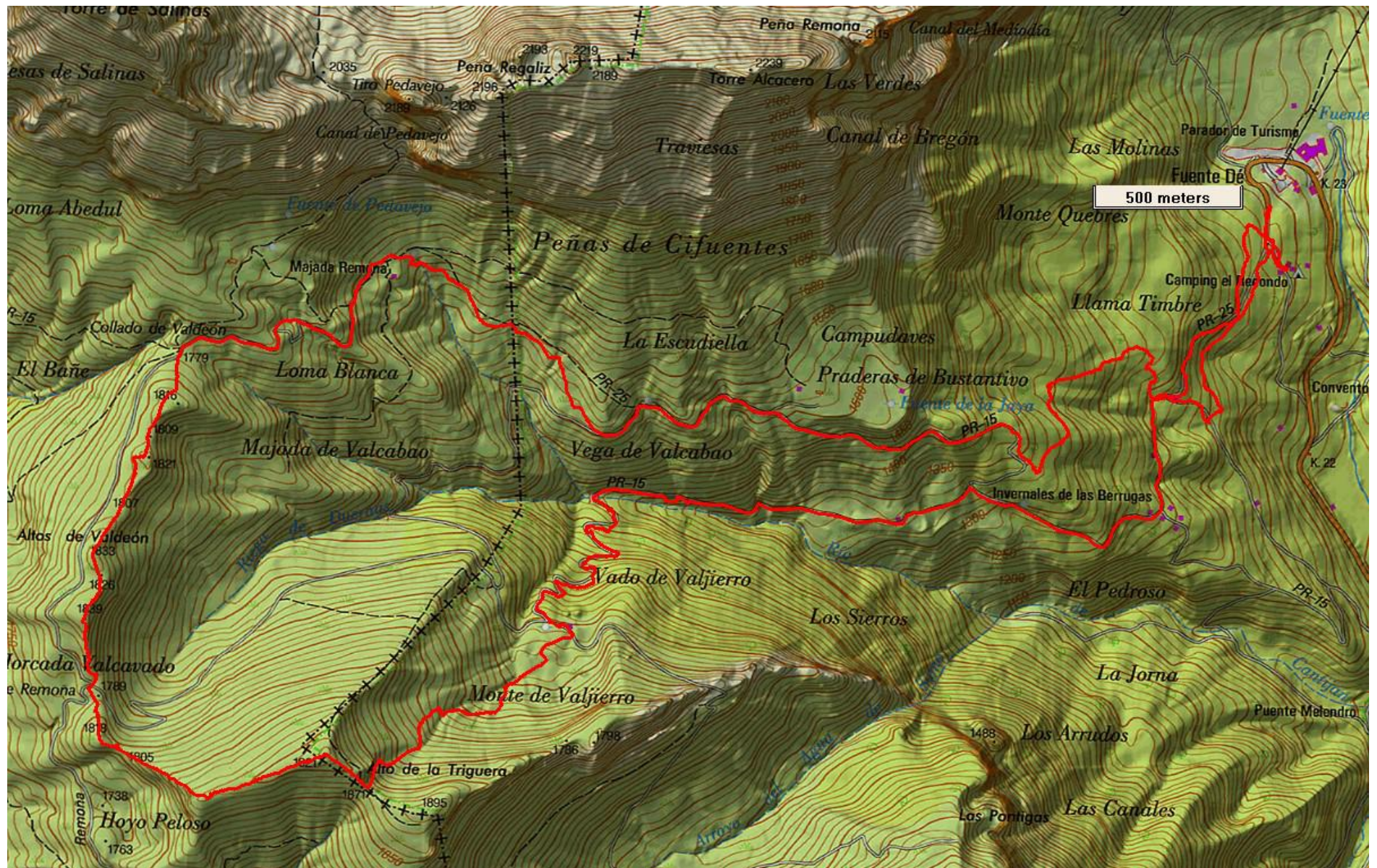
## **COSTA BLANCA MOUNTAIN WALKERS - WALK DESCRIPTION**

Visit [www.walksinspain.org](http://www.walksinspain.org) for more walks descriptions in Spain

<b>Walk description originally prepared by:-</b>	John Turner
<b>Last Updated</b>	1 <sup>st</sup> .June 2025
<b>Title of Walk</b>	Alto de la Triguera and Collado de Valdeon from Fuente De
<b>Location of Start (include name of nearest village/town at start of description)</b>	Fuente De Main car park at base of cable car on CA185
<b>Key Statistics for walk - Distance in km</b>	16 kms
<b>Key Statistics for walk - Ascent in m</b>	900 mtrs
<b>Key Statistics for walk - Walking time and total completion time including any stops</b>	6 hr. 7 hr.
<b>Key Statistics for walk - Grade (using CBMW system)</b>	VS/C
<b>Grid reference of start point (if known)</b>	Lat : 43.140000 Long : -4.812400
<b>Directions to Start</b>	From Potes direction on CA185 turn R into main car park at base of Fuente De Cable Car, park at far side
<b>Short walk description</b>	A challenging circuit starting up the Cantijon valley, crossing the Monte Valjierro and ascend to reach the Trig point of Alto de la Triguera, pass by Caben de Remona, Col de Valdeon and return mostly on tracks originally used by traders travelling to fairs and livestock markets. Extensive views of surrounding peaks and valleys with possible sightings of eagles, vultures, rebecos (chamois.) and a generous variety of wild flowers
<b>Full Walk Description</b>	
<p>The ascent and descent areas on Alto de la Triguera include some some rough (not scratchy.) scrubland with no distinct path line.</p> <p style="font-size: small;">Spanish maps included within these descriptions are provided courtesy of the Spanish IGN and remain © Instituto Geográfico Nacional</p>	
<b>Walk Recommendations or restrictions</b>	None

**Remember that you use these walk guides at your own risk. Take precautions and if unsure – turn back!**

**Route followed is outlined in Red**



**Remember that you use these walk guides at your own risk. Take precautions and if unsure – turn back!**