

COSTA BLANCA MOUNTAIN WALKERS - WALK DESCRIPTION

Visit www.walksinspain.org for more walks descriptions in Spain

Walk description originally prepared by:-	Ralph Phipps 23rd February 2015	
Last Updated	7th May 2025 Grace Morris	
Title of Walk	Mediodia low traverse from Tormos.	
Location of Start (include name of nearest village/town at start of description)	Tormos. Continue past Skatepark on L to empty field opposite Espacio Natural Costera del Moll, Tormos	
Key Statistics for walk - Distance in km	6.2	
Key Statistics for walk - Ascent in m	240	
Key Statistics for walk - Walking time and total completion time including any stops	2.25hr 3.25hr	
Key Statistics for walk - Grade (using CBMW system)	M/C	
Grid reference of start point (if known)	Lat: 38.798758, Long:-0.07757	
Directions to Start	Coming from the south (Orba) on the CV715 at the outskirts of the village turn L (signposted cabanyes del moll) into Calle Pozo. Take next L into Carrer Vall De Laguart and then take 2nd turn on the right just after rubbish bins. Drive to the end turn L into Avenida Joan Carles 1. Drive 450m passing skate park on the L. Park on L in a barren field opposite some small stone cabins.	
Short walk description	A walk up the flanks of this ridge to Font Centella and a descent on a Y/W path. There are wonderful views. Undulating on scrappy paths for a while then easier going.	
Full Walk Description	Elapsed Walking Time/Distance so far	
<p>Walk out of the parking area, turn left, walk along the tarmac road.</p> <p>Follow this curving round to the right passing a pumping station. At a bend where there is obvious parking on the right and left hand side before the road sweeps up to the R to a deposito. Go down a steep bank slightly to the left and drop into the barranco.</p> <p>There is evidence of some old steps down to the barranco. Work your way to the right up the barranco a little (c.60m) before trending left and finding the obvious</p>	570m 10mins	

Remember that you use these walk guides at your own risk. Take precautions and if unsure – turn back!

COSTA BLANCA MOUNTAIN WALKERS - WALK DESCRIPTION

continuation of the engineered mozarabic trail marked with a small cairn that starts up just slightly on the left above the barranco.

This zig zags up steeply and eventually reaches a flatter area.

with two large pine trees on the right, continue ahead ignoring a path to the left.

After a few metres upon reaching a cairn on the left, go to the left behind and up some shallow scree following occasional green markings.

1.2km 31 mins

Follow a track down two small bancales and then start trending right towards a ruined casa just near the head of a barranco. Walk through the ruins and follow a clear line into a barranco.

There is a clear route up at the bottom of a small crag marked with a cairn. Watch for this carefully as a cairn suggests that you go straight on. Go up the small rock wall and then keep left onto an overgrown mozarabic trail which is clear in some places and quite hard to follow in others.

Keep following this up – it is marked reasonably generously with spots and cairns. This track is slightly difficult to follow and in one or two places.

In any event by judicious peering about for some cairns (subject to animal damage!) you will be able to follow the route as it reaches a rock slab at 1.45km on your R. Scramble up this for a couple of moves then make your way up a scrappy path behind some trees reaching the end of a spur where it abruptly turns R.

1.55km 40 mins

Just around this spur, drop down a little, indicated by cairns to reach a short section of eroded mozarabic path and then trend upwards on a fault line through broken rock again on a clear path.

Go around the head of a second barranco still on a clear line and then at 1.77km. Go slightly uphill and look out for a boulder on the right leading to a corralled cave, that is a cave with a wall round its entrance.

1.77km 46 mins

After visiting the cave, return to the path and continue working into a very large barranco on the right.

Follow this track carefully as it descends generally but rises up once to round a couple of rocks – mind your head on some of these – and then descends again on a very clear line with both green circles and red dots to help you find your way. Lowish down take care at a junction where there appears to be a line going straight on. There is also one slightly up to the right – take this one – and it soon crosses a small ridge and drops down to an empty water deposito on the left and after a few metres a fuente – Font Centella – on the right, this is worth a visit. Return to the path, now a marked Y/W path.

2.12km 54 mins

The path crests a small spur and then starts to drop downhill steadily towards the ruined casita you could see from by the corralled cave.

2.44km 1hr

Pass this and continue ahead following Y/W markers first out to a spur with the largest visible pine tree. Just before the pine, swing left to begin a zig zag descent on the flanks of the mountain aiming for a soon visible ruin down below on a small plateau.

3.21km, 1hr 22min

When you reach the ruin there is a finger post.

Remember that you use these walk guides at your own risk. Take precautions and if unsure – turn back!

COSTA BLANCA MOUNTAIN WALKERS - WALK DESCRIPTION

Continue ahead on a track towards Orba on the PR-CV368 to a junction in 90m where you turn L, still on a track. At the bottom of the track walk ahead across a sometimes cultivated field and drop into the barranco in front of you on the LHS still following Y/W markers. This drifts from side to side for a while but then finally crosses to the RHS to exit along a level terrace to a track where you turn L. Follow this ahead ignoring side turnings until you reach a metalled track where you turn L.

4.36km, 1hr 40min

Continue along this track towards Tormos for 1.04km turn L onto a wide rough stony track just before the road drops down to cross a barranco.

5.39km, 1hr 57 min

This track leads slightly uphill passing a water pumping station, turn R to retrace your steps directly back to the parking area.

6.02km, 2hr 8min

Spanish maps included within these descriptions are provided courtesy of the Spanish IGN and remain © Instituto Geográfico Nacional

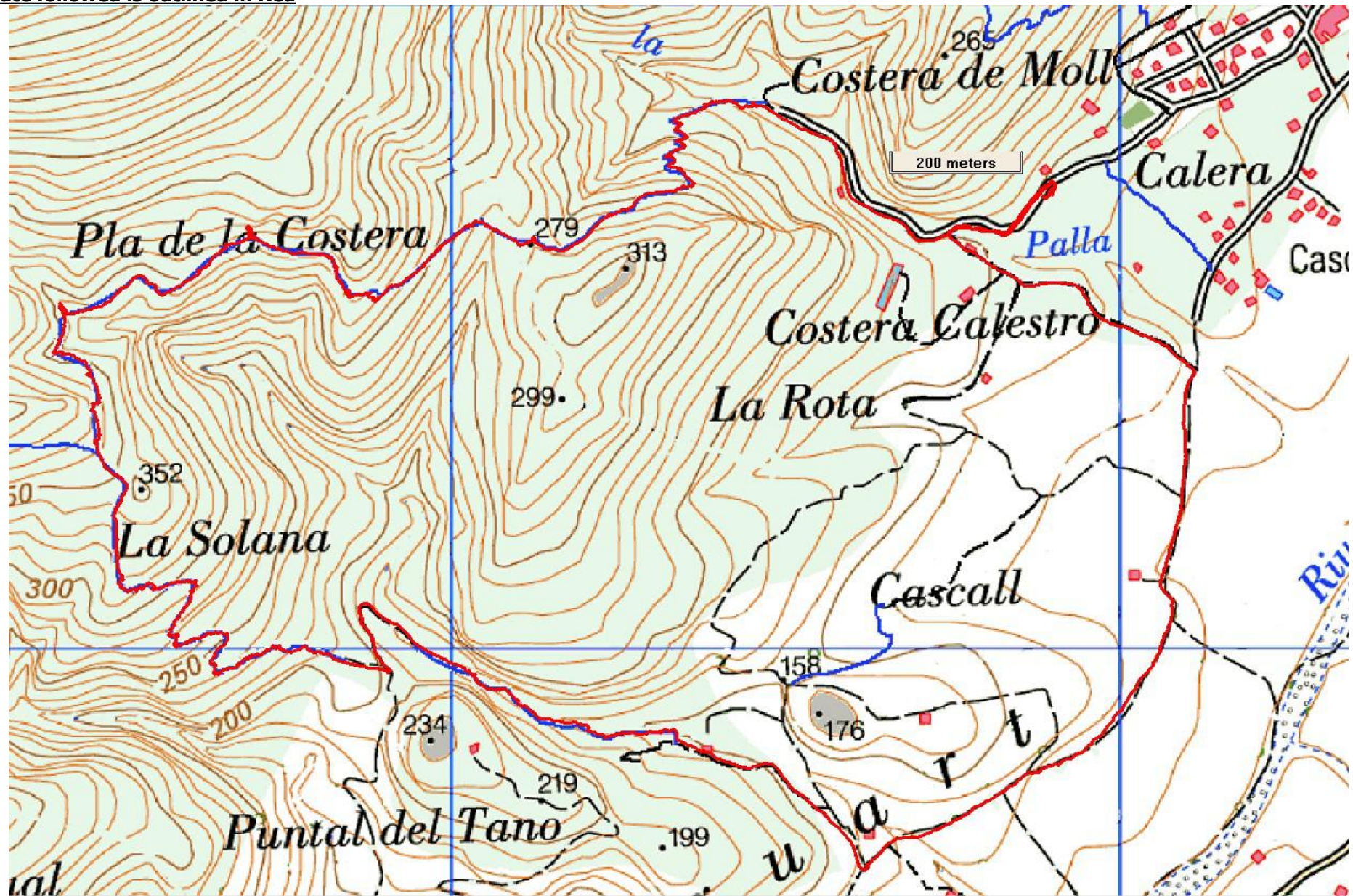
Walk Recommendations or restrictions

None

see map below.....

Remember that you use these walk guides at your own risk. Take precautions and if unsure – turn back!

Route followed is outlined in Red



Remember that you use these walk guides at your own risk. Take precautions and if unsure – turn back!