

COSTA BLANCA MOUNTAIN WALKERS - WALK DESCRIPTION

Visit www.walksinspain.org for more walks descriptions in Spain

Walk description originally prepared by:-	Colin Read
Last Updated	21st May 2025
Title of Walk	Simat to Cova de Patricio & Monastery Circuit.
Location of Start (include name of nearest village/town at start of description)	Simat de la Valldigna. Car park area or roadside parking adjacent to Motorcaravan designated area.
Key Statistics for walk - Distance in km	6
Key Statistics for walk - Ascent in m	320
Key Statistics for walk - Walking time and total completion time including any stops	2.25hr 4hr
Key Statistics for walk - Grade (using CBMW system)	M/B
Grid reference of start point (if known)	Lat: 39.04122, Long: -0.30801
Directions to Start	From roundabout on CV-600 at edge of town turn L onto CV-675 bypass. At roundabout turn 2nd R towards Barx. Turn 1st R over bridge then immediately L onto C' dels Brolls. Bear R to car park on L or park on street (Sat nav might send you through the town).
Short walk description	A country lane then paths lead via a steep climb to reach and cross barranco Fondo. An optional visit to a cave. A balcony pathway with fine views. Paths then wind down to the western end of the town. Passing through it via fonts and an optional (worthwhile) visit to the Monastery.
Full Walk Description	<div> <div> Elapsed Walking Time/Distance so far </div> <div> <p>Walk along the road C' Dels Brolls towards the mountain. At 'T' junction turn L into C' Penyalba, signposted to 'Barx' PR-CV 51 (Y/W). Follow the cami to reach a 'Y' junction (This is just beyond where a concrete driveway goes steeply up to the right).</p> <p>Turn R signed to 'Cova de Patricio' PR-CV 50. The track becomes unsurfaced. Continue to reach a junction where there is a chain on the track ahead and a rough track on the R. Here, the Y/W path goes up a slope of bare rock in front of you on the R. Follow it, passing a 'Forn de Calc' along the way. At a sign to a second 'Forn de Calc' (optional). Turn L and descend a little to reach it (it's just out of sight). Then return to this sign. Continue to reach a junction with a path on the right at a signpost.</p> </div> <div> <p>8min, 454m</p> <p>24min, 1.2km</p> </div> </div>

Remember that you use these walk guides at your own risk. Take precautions and if unsure – turn back!

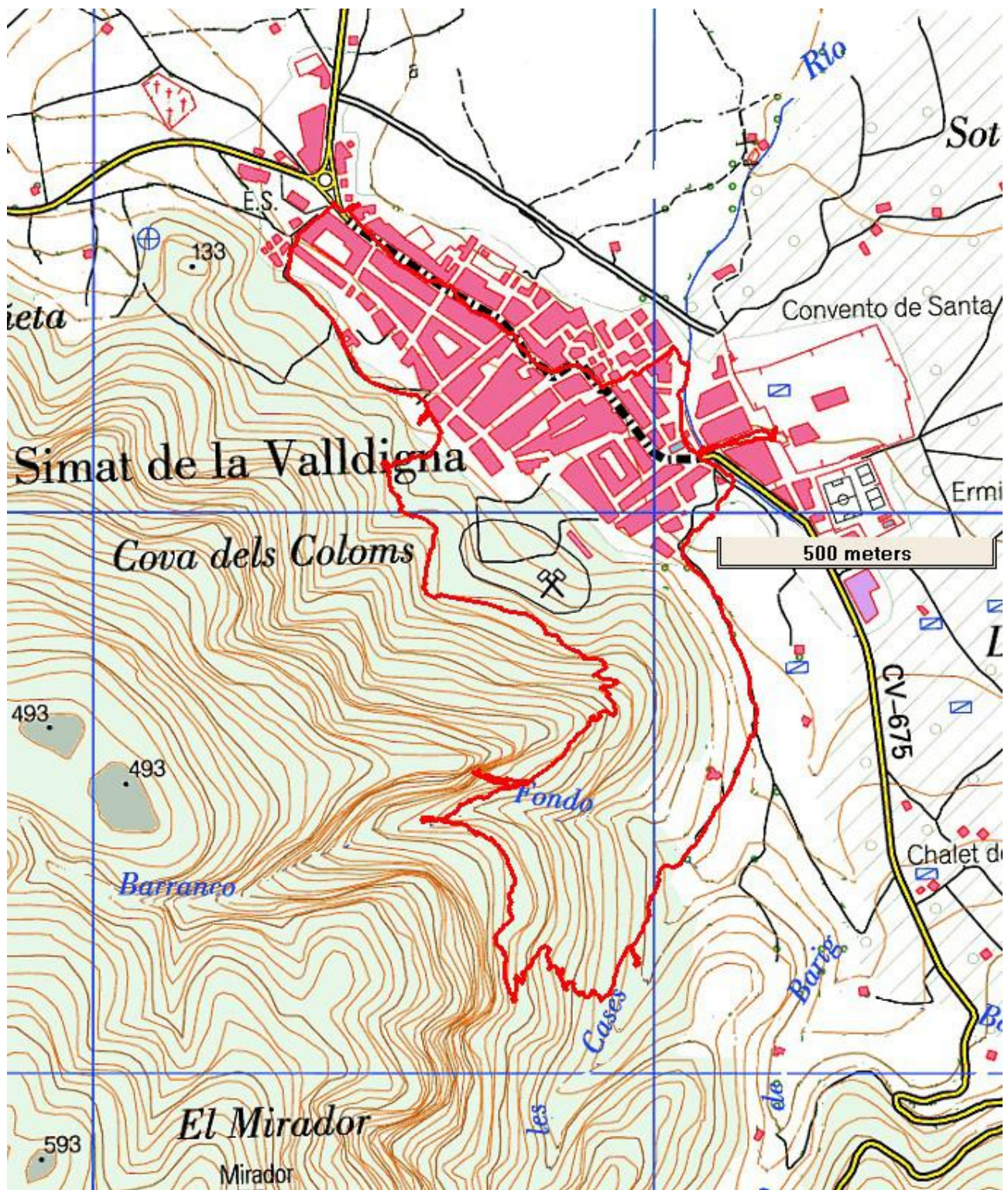
COSTA BLANCA MOUNTAIN WALKERS - WALK DESCRIPTION

Turn R signed to 'Cova de Patricio' PR-CV 50.2. Climb steeply up hairpins. The path then traverses right before descending into the barranco, where it doubles back and rises out of the opposite side to reach a signpost to 'Cova de Patricio PR-CV 50.29'.	55min, 2.3km
Turn L along this short but in places eroded path to visit the cave. Return by the same route. (The cliffs beside the caves are used by climbers).	1hr 2 min, 2.5km
Continue straight ahead, signed to 'Simat de la Valldigna' PR-CV 50.2. The path traverses around the hillside above the town. It then descends to just above the orange groves. Ignore a path descending on the right. Climb up L and skirt round above the orange grove before descending to reach a post on the left at a path junction.	1hr 28min, 3.5km
Turn L (Y/WX). Soon at a junction turn R and traverse to a vague junction bare R (Y/W) slightly downhill for a short distance. When the path levels off before rising again, there is a large rock in the middle of the path. Turn R down down a rocky slope onto a path which descends through grass towards the town. Follow it to just before reaching a road end.	1hr 34min, 3.8km
Turn L onto a path behind a Carob tree, go across open ground, passing the end of another road. Continue directly over rough ground to a junction with a surfaced cami. Turn L onto a footpath which is just above the road and follow it slightly uphill at first passing orange groves, then bare down onto the surfaced cami. Ignore side roads and paths, continue to where it turns right downhill beside 'Casa la Abuela'	1hr 43min, 4.3km
Continue downhill to a junction of roads. Go straight ahead down and across into C' de Xativa. Descend it and cross a road to steps which lead down to 'Font Menor.' go down steps across stepping stones up the other side and cross the road to view 'Llavador de la Font Menor.'	1hr 46min, 4.4km
Turn back towards an information board, then go L along. along 'Av Font Menor' passing the church of 'Saint Miquel Archangel' formerly an Arab mosque. After that bear left to reach the 'Placa Constitucio and the 'Casa del Poble'.	1hr 56min, 5.1km
Continue ahead into C' Major. Turn first L along C' de Marie Benlliure. At a junction go straight ahead along C' Tavernes, to reach a mini roundabout. Turn R into 'Passeig del Nou d'Octubre' and move to your left to observe the river. Further along on the right is the subterranean 'Llavador de la Font Gran' and further ahead is the 'Font Gran.'	2hrs 2min, 5.4km
Optional: From here it is possible to visit the Monastery (highly recommended). Pass the font to the road and turn L. Go across the main road and then straight ahead along C' del Convent. At the 'T' junction cross the road towards the R to arrive at the Monastery entrance and just to its R is the tiny chapel (for the peasants!).	
At the time of writing the opening hours are:- 16th September until 14 of June 10.00 to 18.00. 15th to 30th June and 1st to 15th September 09.00 to 13.00 and 16.00 to 20.00. July and August 09.00 to 13.00 and 17.00 to 00.00.	
After visiting, reverse the same route back to the edge of 'Font Gran.'	2hrs 8min, 5.8km
Turn L across the road into and along C' del Sol, then turn right to reach the parking area.	2hr 11min, 5.9km
<small>Spanish maps included within these descriptions are provided courtesy of the Spanish IGN and remain © Instituto Geográfico Nacional</small>	
Walk Recommendations or restrictions	None

Remember that you use these walk guides at your own risk. Take precautions and if unsure – turn back!

see map below.....

Route followed is outlined in Red



Remember that you use these walk guides at your own risk. Take precautions and if unsure – turn back!