

MCOSTA BLANCA MOUNTAIN WALKERS - WALK DESCRIPTION

Visit www.walksinspain.org for more walks descriptions in Spain

Walk description originally prepared by:-	Mary Gough
Last Updated	20 th .June .2025
Title of Walk	Vall del Estret
Location of Start (include name of nearest village/town at start of description)	Calpe
Key Statistics for walk - Distance in km	20.8kms
Key Statistics for walk - Ascent in m	840 mtrs
Key Statistics for walk - Walking time and total completion time including any stops	5hr 45 min 6hr 40 min
Key Statistics for walk - Grade (using CBMW system)	VS/C
Grid reference of start point (if known)	Lat: 38.644026 Long : 0.028274
Directions to Start	N332 south of Calpe Norte and Sur signs, at Km 166.6 just after a LH bend turn R onto side road with bins -ample parking but no L turn from Altea direction
Short walk description	A challenging varied circular walk through the ' secret barranco ', with an interesting return around the flanks of Olta . Extensive views of mountains and coastline .
Full Walk Description	Elapsed Walking Time/Distance so far
From car park walk up the road for 50 mtrs. Turn L across small wooden bridge (G/W) onto a path, continue (after 20 mtrs ignore a path at R and follow G/W, contour around a small barranco, level off , ignore a R fork at 900mtrs.with cairn and continue to reach a surfaced road.	1.2km 20min
Turn L for 10 mtrs then R (G/W) onto path alongside lower perimeter fence of a villa.Continue and ignore a L path (into Mascarat Gorge) trend L then R at signpost (Cepeller .G/W)after 20mtrs ignore a track at RHS and reach old shooting range	2.1kms 35min
Walk to LHS of range, continue to soon after reach a junction and signpost . Turn R then almost immediately L onto a feint path (G/W) wind around and pass to LHS of an abandoned dwelling, trend R and pass through a wooded area and look for path at RHS	2.8km 48min
Turn sharp R on this path (G/W)and continue around RHS of a barranco and across the RHS of an open area to reach a farmhouse (Masia des Calvos), keep L of this and drop onto surfaced camino	3.3m 55min

Remember that you use these walk guides at your own risk. Take precautions and if unsure – turn back!

MCOSTA BLANCA MOUNTAIN WALKERS - WALK DESCRIPTION

Turn R and follow cami, under the motorway tunnel to reach a junction in front of a house	3.8km
Take R fork and continue, passing another dwelling to reach a RH bend with solidified mound of earth on LH verge.	4.7km 1hr10min
Turn L (cairn) onto a path and wind down into riverbed, turn R and follow barranco, keeping L of first and second waterholes, climb the next dry waterfall (chains), pass a capped off borepipe, the barranco trends L then R and soon after look for cairn and red paint marker at LHS	7.5km 2hr26min
Turn L out of riverbed and ascend steeply up hillside (cairns /red paint) to reach ridgeline	8.02km 3hrs
Walk forwards onto clear path (cairn) and descend into the valley, the path reaches terraces and becomes feinter, look for visible track below to turn R then L to reach it, reach a finca and drop onto tarmac. Follow tarmac to reach riverbed.	8.8km 3hr 12min 9.2km
Cross riverbed and within a couple of metres turn R (cairn) onto path, soon after near the 'climbing restriction ' sign turn L, continue through valley to reach cultivated terraces	9.8km 3hr30min
Turn along LHS, after 3 rd terrace turn R and almost immediately L (cairn) onto feint path ascending forwards and through trees to emerge on a track	9.9km
Turn R to pass to RHS of a dwelling, continue to reach a L fork /driveway and within a few mtrs look for path on RH bankside (cairn)	10.6km 3hr45min
Turn R up this path, ignore a L fork, pass by vine fields and as the path levels off (concrete marker) trend L onto a mozzarabic path to descend and reach a track Turn R and continue (ignore any R forks) to reach a restored finca on RH hillside	12.5km4hr23min 13.3km
Turn L onto path, follow forwards then down and after 100mtrs (cairn) drop onto surfaced camino, turn L and under motorway and continue on camino and pass to LHS of a restored dwelling (1a. la Cannella) after 500 mtrs reach a junction, take R fork and follow to reach a LH bend, turn R over a low wire and onto a path (Coto de Caza sign) and continue to reach a ruin	14.8 km
Turn sharp L on feint path and rise up through trees to emerge back on forest track Turn R and continue to a junction with signpost	14.9 km 15.7km 5hr19min
Take L fork (zona Acampada Norte)and continue for 300mtrs to reach a small junction, turn R off track and after another 200mtrs reach a junction (cairn,blue paint)	16.2km 5hr24min
Turn R onto path and continue to reach a small junction	16.8km
Turn L onto feint path for 100mtrs then drop down onto forest track, turn L and continue to reach a junction with signpost, go directly across (Ermita La Vella), soon after ignore a R fork and continue to reach the Ermita (usually waterpump with freshwater)	18.8km 6hr5min
Continue past Ermita entrance, then R at next junction (Estacion) and continue on main track to reach car park	

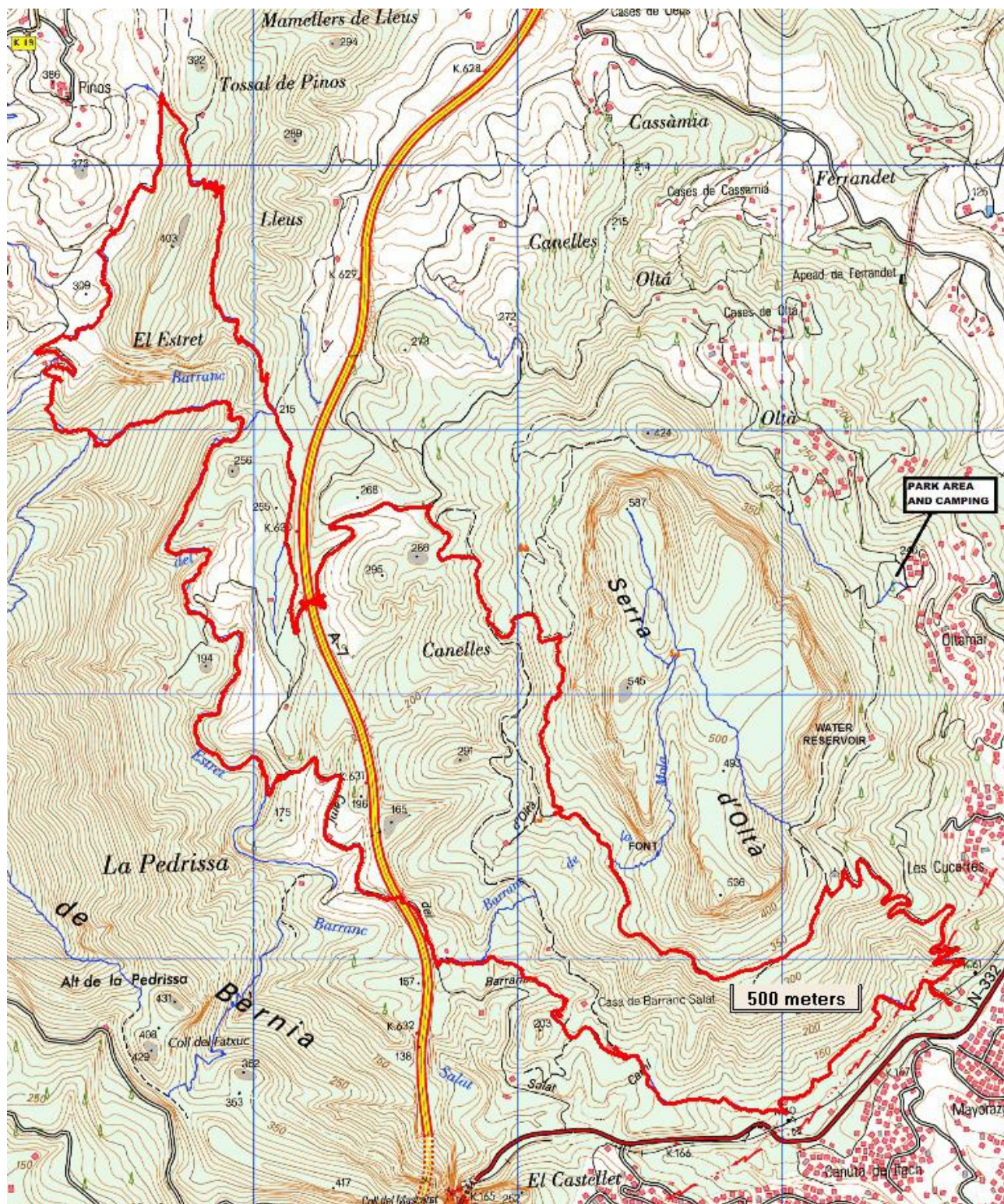
Spanish maps included within these descriptions are provided courtesy of the Spanish IGN and remain © Instituto Geográfico Nacional

Walk Recommendations or restrictions

None

Remember that you use these walk guides at your own risk. Take precautions and if unsure – turn back!

Route followed is outlined in Red



Remember that you use these walk guides at your own risk. Take precautions and if unsure – turn back!