

## **COSTA BLANCA MOUNTAIN WALKERS - WALK DESCRIPTION**

Visit [www.walksinSpain.org](http://www.walksinSpain.org) for more walks descriptions in Spain

<b>Walk description originally prepared by:-</b>	Colin Read	
<b>Last Updated</b>	29th October 2025	
<b>Title of Walk</b>	Castell De Marinyen and Barranc de Cremades Circuit	
<b>Location of Start (include name of nearest village/town at start of description)</b>	Tavernes de la Valdigna. Parking at side of road near the junction of Cami l'Ombria and Cami Del Clot.	
<b>Key Statistics for walk - Distance in km</b>	13	
<b>Key Statistics for walk - Ascent in m</b>	576 (Without options 621 with)	
<b>Key Statistics for walk - Walking time and total completion time including any stops</b>	4.25hr 6hr	
<b>Key Statistics for walk - Grade (using CBMW system)</b>	MS/C (Without options S/C with)	
<b>Grid reference of start point (if known)</b>	Lat:- 39.06256 Long:- -0. 26782	
<b>Directions to Start</b>	From the roundabout on the CV-50 at the western edge of the town. Turn south onto C' La Farola. Follow it to a 'T' junction. Turn L towards the no entry sign then immediately R before them. At junction turn R then L along C' Del Clot at 'T' junction turn R onto C' l'Ombria and park at side of road. Note:- Sat Nav may take you via other narrow Camis.	
<b>Short walk description</b>	A visit to a font. Rugged paths through woodland. Steeply up stoney path to explore a moorish/christian castle ruin. Gradual ascent to a plateau and a mirador. Descent down a Mozarabic path with visit to a second mirador (optional). Mostly rugged rocky/stoney paths, some unmarked and a little overgrown in places but not scratchy. Varied terrain with splendid views.	
<b>Full Walk Description</b>	<b>Elapsed Walking Time/Distance so far</b>	
Walk west along C' l'Ombria signed to 'Clot de la Font'' to reach the font.  From the fingerpost at the back of the font. Turn R signed to 'Moli Vell del Pla' PR-CV 51 Walk towards a gate leading into an orange grove. In front of which a wide path leads off to the L. Follow it, alongside the orange groves to reach a junction with a track going to the right. It has a sign post pointing to 'Moli Vell del Pla' ignore it. Follow the narrow path which continuous straight ahead. Soon you pass an abyss on your left (easily missed) it has a steel grid cover. Immediately after it you reach the corner of a fence. After a few more meters look for an obscure overgrown path branching up left	909m, 12min	

**Remember that you use these walk guides at your own risk. Take precautions and if unsure – turn back!**

## **COSTA BLANCA MOUNTAIN WALKERS - WALK DESCRIPTION**

<p>(cairn) into the woodland where, in a very short distance you reach a poorly located sign post.</p>	<p>1.6km, 21min</p>
<p>Turn R signed to 'Castell De Marinyen PR-CV 51' Follow the path which is rugged and in places little over grown but not scratchy. It weaves up and down through the woodland (white paint marks). After descending almost down to the orange groves again it bears L uphill, eventually emerging onto more open terrain, before descending to follow a pipeline then stepping over it, where it continuous to traverse along before descending onto a track. Turn L to reach a surfaced road. Turn L and in about 20 metres at a junction of tracks.there is an information board with three stone steps next to it. Looking up from here the castle ruin can be seen towering above.</p>	<p>2.8km, 53min</p>
<p>Go up the steps to gain and follow a rocky path which zig-zags up to reach a ruined arch entrance, beside which is an information board. The path bears R to pass beneath the main part of the ruin until it reaches a junction with a signpost.</p>	<p>3.6km, 1hr 14min</p>
<p>Turn L to enter the castle and after thoroughly exploring its interior return to the signpost.</p>	<p>4.1km, 1hr 30min</p>
<p>Facing the signpost turn R signed to 'Pla de Santoma.' Follow the unmarked path which goes along a broad ridge keeping near its crest and moving from side to side occasionally. Eventually the path climbs gradually up to and then crosses the plateau above. To arrive at a clearing, bear R along a track to reach a signpost at a junction.</p>	<p>6.6km, 2hr 30min</p>
<p>Turn R signed to 'Les Foies (Font Nova) PR-CV 51.' Follow the track to the start of a right-hand bend, and a junction with a path on the L. Turn L along it signed to Balco/Pla de la dels Esmoladors.' Continue to the Mirrador.</p>	<p>7.2km, 2hr 40min</p>
<p>Continue (eastwards) along the path to a cross junction of paths at a signpost.</p>	<p>7.7km, 2hr 49min</p>
<p>Turn L signed as the 'Senda de la Taula' ignore a path on the right and continue (signed to 'Tavernas de la Valldigna PR-CV 51-V1') to reach another junction with a signpost.</p>	<p>8.7km, 3hr 02min</p>
<p>Turn R along the track signed to 'Tavernas De La Valldigna and Partage Clot De La Font.' After a short distance ignore a track on the right and continue straight ahead on a track which soon becomes a path (this is the 'Senda Historica Cami De La Cadira'). Follow it as it begins to descend along the eastern flank of the 'Barranco de Cremades.' Eventually a junction with a path on the right beside a signpost is reached.</p>	<p>10.3km, 3hr 30min</p>
<p>Turn R (optional) to visit the 'Mirrador de la Cadira' with its picnic bench and information board. Then return to this junction.</p>	<p>10.8km, 3hr 40min</p>
<p>Turn R downhill (straight ahead if not visiting the mirrador), soon you begin to descend a long series of zig-zags. At the bottom step over a pipe to reach a signpost.</p>	<p>12.2km, 4hr</p>
<p>Continue down around the final bend signed to 'Tavernas de la Valldigna.' The track soon becomes a surfaced road. Pass beside a barrier and continue to a cross roads with signposts (broken off at the time of writing). Turn L to reach a junction just beyond which is the car parking area.</p>	<p>13.1km, 4hr 15min</p>

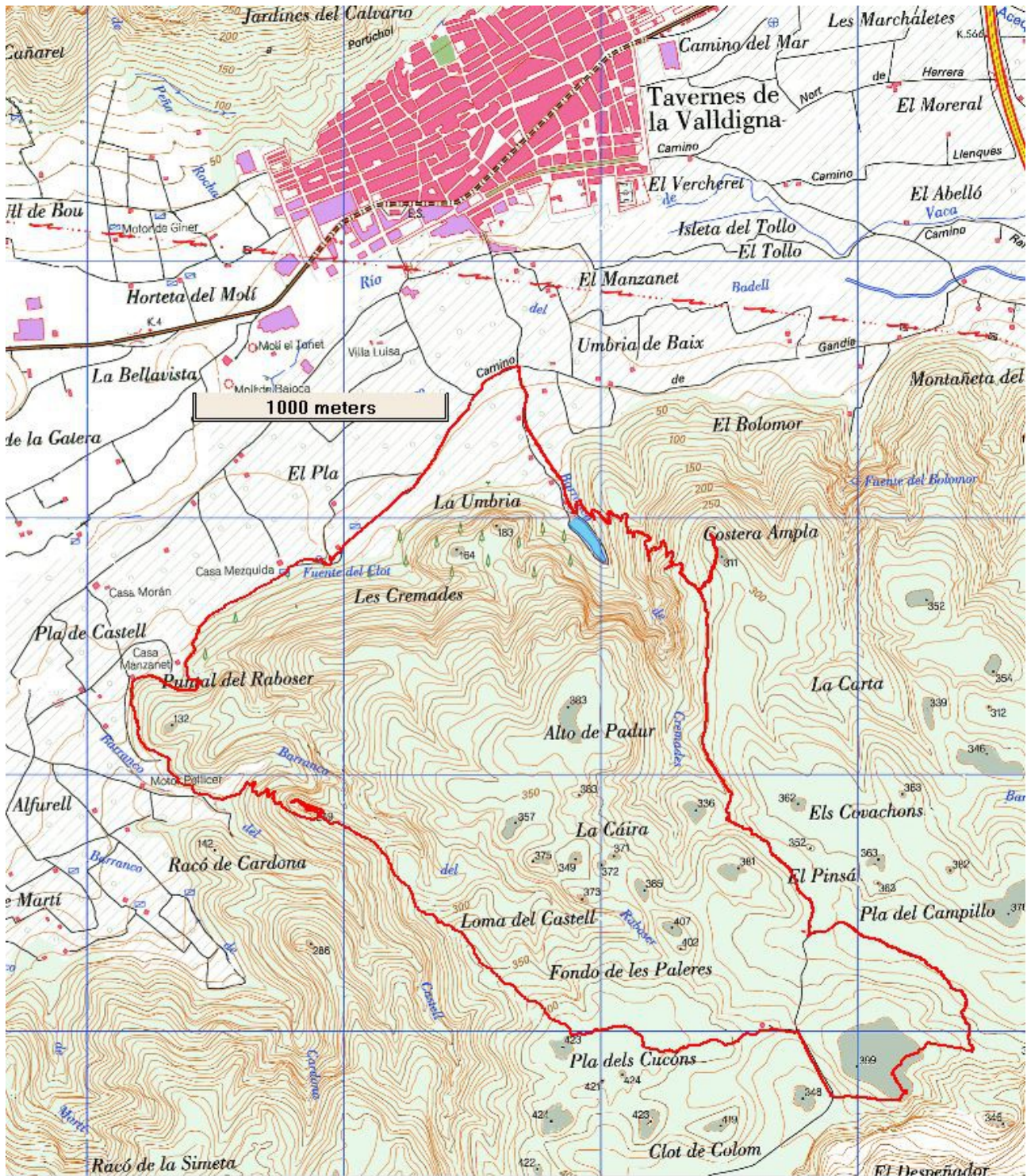
Spanish maps included within these descriptions are provided courtesy of the Spanish IGN and remain © Instituto Geográfico Nacional

### **Walk Recommendations or restrictions**

The grade of this walk is borderline and some might consider it to be worthy of S/C.

**Remember that you use these walk guides at your own risk. Take precautions and if unsure – turn back!**

**Route followed is outlined in Red**



**Remember that you use these walk guides at your own risk. Take precautions and if unsure – turn back!**